

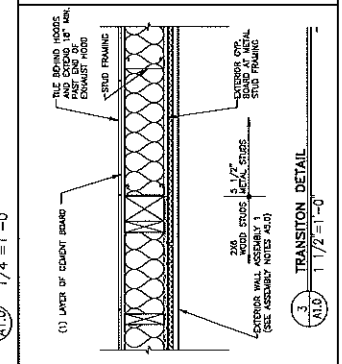
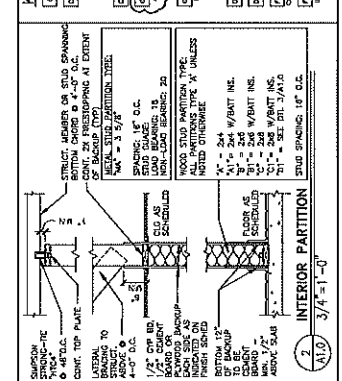
REV	DATE	DESCRIPTION
A	7/2/20	ISSUANCE
B	6/10/21	NO CHANGES

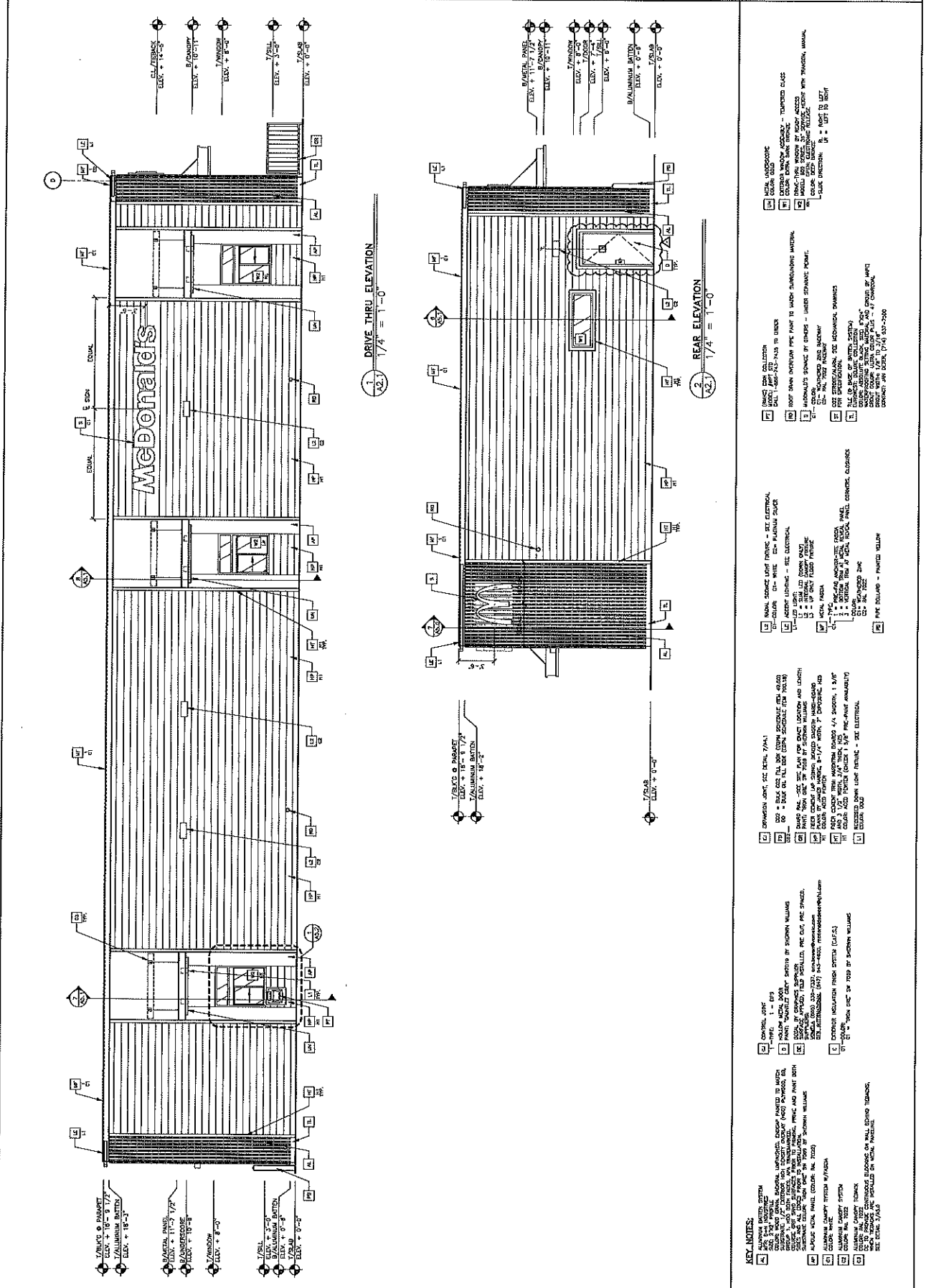
McDonald's USA, LLC
 2017 STANDARD BUILDING - BR20
 ARCHITECT
 1000 WOODLAND AVENUE
 SUITE 100
 WOODBRIDGE, NJ 07095
 908.848.1000
 www.mcdonalds.com

- ### GENERAL NOTES
1. EXTERIOR DIMENSIONS ARE TO COLUMN CENTER LINES AND EXTERIOR FACE OF INTERIOR WALLS UNLESS NOTED OTHERWISE. INTERIOR DIMENSIONS ARE TO FACE OF PARTITION UNLESS NOTED OTHERWISE. PARTITION TYPES AND GLASS TYPES ARE SHOWN IN THE PARTITION TYPES AND GLASS TYPES SCHEDULES.
 2. SEE EXTERIOR ELEVATIONS FOR WINDOW TYPES AND SCHEDULES.
 3. SEE EXTERIOR ELEVATIONS FOR DOOR TYPES AND SCHEDULES.
 4. SEE SITE PLAN FOR OCCUPANCY, MARKS, ETC.
 5. SEE TO PROVIDE AND INSTALL ALL MATERIALS AND LABORERS AND MATERIALS TO BE PROVIDED BY OTHERS. SEE THE SCHEDULES FOR MATERIALS TO BE PROVIDED BY OTHERS.
 6. SEE TO PROVIDE AND INSTALL ALL MATERIALS AND LABORERS AND MATERIALS TO BE PROVIDED BY OTHERS. SEE THE SCHEDULES FOR MATERIALS TO BE PROVIDED BY OTHERS.
 7. MATERIAL OCCUPANCY TO BE PROVIDED PER LOCAL CODE. SEE UNIFORMED COMMERCIAL CODE (UCC) FOR LOCAL CODE. SEE UNIFORMED COMMERCIAL CODE (UCC) FOR LOCAL CODE.
 8. ALL MATERIALS SHALL BE PROVIDED BY THE CONTRACTOR. SEE LOCAL CODE FOR MATERIALS TO BE PROVIDED BY THE CONTRACTOR.
 9. ALL MATERIALS SHALL BE PROVIDED BY THE CONTRACTOR. SEE LOCAL CODE FOR MATERIALS TO BE PROVIDED BY THE CONTRACTOR.
 10. MATERIALS TO BE PROVIDED BY THE CONTRACTOR. SEE LOCAL CODE FOR MATERIALS TO BE PROVIDED BY THE CONTRACTOR.

- ### KEY NOTES
- A FLOOR LINE - CHANGE IN MATERIALS - SEE ARCH DRAWINGS
 - B FLOOR LINE - CHANGE IN MATERIALS - SEE ARCH DRAWINGS
 - C FLOOR LINE - CHANGE IN MATERIALS - SEE ARCH DRAWINGS
 - D FLOOR LINE - CHANGE IN MATERIALS - SEE ARCH DRAWINGS
 - E FLOOR LINE - CHANGE IN MATERIALS - SEE ARCH DRAWINGS
 - F FLOOR LINE - CHANGE IN MATERIALS - SEE ARCH DRAWINGS
 - G FLOOR LINE - CHANGE IN MATERIALS - SEE ARCH DRAWINGS
 - H FLOOR LINE - CHANGE IN MATERIALS - SEE ARCH DRAWINGS
 - I FLOOR LINE - CHANGE IN MATERIALS - SEE ARCH DRAWINGS
 - J FLOOR LINE - CHANGE IN MATERIALS - SEE ARCH DRAWINGS
 - K FLOOR LINE - CHANGE IN MATERIALS - SEE ARCH DRAWINGS
 - L FLOOR LINE - CHANGE IN MATERIALS - SEE ARCH DRAWINGS
 - M FLOOR LINE - CHANGE IN MATERIALS - SEE ARCH DRAWINGS
 - N FLOOR LINE - CHANGE IN MATERIALS - SEE ARCH DRAWINGS
 - O FLOOR LINE - CHANGE IN MATERIALS - SEE ARCH DRAWINGS
 - P FLOOR LINE - CHANGE IN MATERIALS - SEE ARCH DRAWINGS
 - Q FLOOR LINE - CHANGE IN MATERIALS - SEE ARCH DRAWINGS
 - R FLOOR LINE - CHANGE IN MATERIALS - SEE ARCH DRAWINGS
 - S FLOOR LINE - CHANGE IN MATERIALS - SEE ARCH DRAWINGS
 - T FLOOR LINE - CHANGE IN MATERIALS - SEE ARCH DRAWINGS
 - U FLOOR LINE - CHANGE IN MATERIALS - SEE ARCH DRAWINGS
 - V FLOOR LINE - CHANGE IN MATERIALS - SEE ARCH DRAWINGS
 - W FLOOR LINE - CHANGE IN MATERIALS - SEE ARCH DRAWINGS
 - X FLOOR LINE - CHANGE IN MATERIALS - SEE ARCH DRAWINGS
 - Y FLOOR LINE - CHANGE IN MATERIALS - SEE ARCH DRAWINGS
 - Z FLOOR LINE - CHANGE IN MATERIALS - SEE ARCH DRAWINGS

- ### SYMBOL LEGEND
1. PARTITION TYPE - SEE 2/A/0
 2. DOOR TAG - SEE DOOR SCHEDULE ON 4/0
 3. SET NOTE
 4. SET NOTE
 5. SET NOTE
 6. SET NOTE
 7. SET NOTE
 8. SET NOTE
 9. SET NOTE
 10. SET NOTE
 11. SET NOTE
 12. SET NOTE
 13. SET NOTE
 14. SET NOTE
 15. SET NOTE
 16. SET NOTE
 17. SET NOTE
 18. SET NOTE
 19. SET NOTE
 20. SET NOTE
 21. SET NOTE
 22. SET NOTE
 23. SET NOTE
 24. SET NOTE
 25. SET NOTE
 26. SET NOTE
 27. SET NOTE
 28. SET NOTE
 29. SET NOTE
 30. SET NOTE
 31. SET NOTE
 32. SET NOTE
 33. SET NOTE
 34. SET NOTE
 35. SET NOTE
 36. SET NOTE
 37. SET NOTE
 38. SET NOTE
 39. SET NOTE
 40. SET NOTE
 41. SET NOTE
 42. SET NOTE
 43. SET NOTE
 44. SET NOTE
 45. SET NOTE
 46. SET NOTE
 47. SET NOTE
 48. SET NOTE
 49. SET NOTE
 50. SET NOTE
 51. SET NOTE
 52. SET NOTE
 53. SET NOTE
 54. SET NOTE
 55. SET NOTE
 56. SET NOTE
 57. SET NOTE
 58. SET NOTE
 59. SET NOTE
 60. SET NOTE
 61. SET NOTE
 62. SET NOTE
 63. SET NOTE
 64. SET NOTE
 65. SET NOTE
 66. SET NOTE
 67. SET NOTE
 68. SET NOTE
 69. SET NOTE
 70. SET NOTE
 71. SET NOTE
 72. SET NOTE
 73. SET NOTE
 74. SET NOTE
 75. SET NOTE
 76. SET NOTE
 77. SET NOTE
 78. SET NOTE
 79. SET NOTE
 80. SET NOTE
 81. SET NOTE
 82. SET NOTE
 83. SET NOTE
 84. SET NOTE
 85. SET NOTE
 86. SET NOTE
 87. SET NOTE
 88. SET NOTE
 89. SET NOTE
 90. SET NOTE
 91. SET NOTE
 92. SET NOTE
 93. SET NOTE
 94. SET NOTE
 95. SET NOTE
 96. SET NOTE
 97. SET NOTE
 98. SET NOTE
 99. SET NOTE
 100. SET NOTE





- KEY NOTES:**
- 1 - EPS
 - 2 - 1/2" POLYSTYRENE INSULATION BOARD
 - 3 - 1/2" GYPSUM BOARD
 - 4 - 1/2" GYPSUM BOARD
 - 5 - 1/2" GYPSUM BOARD
 - 6 - 1/2" GYPSUM BOARD
 - 7 - 1/2" GYPSUM BOARD
 - 8 - 1/2" GYPSUM BOARD
 - 9 - 1/2" GYPSUM BOARD
 - 10 - 1/2" GYPSUM BOARD
 - 11 - 1/2" GYPSUM BOARD
 - 12 - 1/2" GYPSUM BOARD
 - 13 - 1/2" GYPSUM BOARD
 - 14 - 1/2" GYPSUM BOARD
 - 15 - 1/2" GYPSUM BOARD
 - 16 - 1/2" GYPSUM BOARD
 - 17 - 1/2" GYPSUM BOARD
 - 18 - 1/2" GYPSUM BOARD
 - 19 - 1/2" GYPSUM BOARD
 - 20 - 1/2" GYPSUM BOARD
 - 21 - 1/2" GYPSUM BOARD
 - 22 - 1/2" GYPSUM BOARD
 - 23 - 1/2" GYPSUM BOARD
 - 24 - 1/2" GYPSUM BOARD
 - 25 - 1/2" GYPSUM BOARD
 - 26 - 1/2" GYPSUM BOARD
 - 27 - 1/2" GYPSUM BOARD
 - 28 - 1/2" GYPSUM BOARD
 - 29 - 1/2" GYPSUM BOARD
 - 30 - 1/2" GYPSUM BOARD
 - 31 - 1/2" GYPSUM BOARD
 - 32 - 1/2" GYPSUM BOARD
 - 33 - 1/2" GYPSUM BOARD
 - 34 - 1/2" GYPSUM BOARD
 - 35 - 1/2" GYPSUM BOARD
 - 36 - 1/2" GYPSUM BOARD
 - 37 - 1/2" GYPSUM BOARD
 - 38 - 1/2" GYPSUM BOARD
 - 39 - 1/2" GYPSUM BOARD
 - 40 - 1/2" GYPSUM BOARD
 - 41 - 1/2" GYPSUM BOARD
 - 42 - 1/2" GYPSUM BOARD
 - 43 - 1/2" GYPSUM BOARD
 - 44 - 1/2" GYPSUM BOARD
 - 45 - 1/2" GYPSUM BOARD
 - 46 - 1/2" GYPSUM BOARD
 - 47 - 1/2" GYPSUM BOARD
 - 48 - 1/2" GYPSUM BOARD
 - 49 - 1/2" GYPSUM BOARD
 - 50 - 1/2" GYPSUM BOARD
 - 51 - 1/2" GYPSUM BOARD
 - 52 - 1/2" GYPSUM BOARD
 - 53 - 1/2" GYPSUM BOARD
 - 54 - 1/2" GYPSUM BOARD
 - 55 - 1/2" GYPSUM BOARD
 - 56 - 1/2" GYPSUM BOARD
 - 57 - 1/2" GYPSUM BOARD
 - 58 - 1/2" GYPSUM BOARD
 - 59 - 1/2" GYPSUM BOARD
 - 60 - 1/2" GYPSUM BOARD
 - 61 - 1/2" GYPSUM BOARD
 - 62 - 1/2" GYPSUM BOARD
 - 63 - 1/2" GYPSUM BOARD
 - 64 - 1/2" GYPSUM BOARD
 - 65 - 1/2" GYPSUM BOARD
 - 66 - 1/2" GYPSUM BOARD
 - 67 - 1/2" GYPSUM BOARD
 - 68 - 1/2" GYPSUM BOARD
 - 69 - 1/2" GYPSUM BOARD
 - 70 - 1/2" GYPSUM BOARD
 - 71 - 1/2" GYPSUM BOARD
 - 72 - 1/2" GYPSUM BOARD
 - 73 - 1/2" GYPSUM BOARD
 - 74 - 1/2" GYPSUM BOARD
 - 75 - 1/2" GYPSUM BOARD
 - 76 - 1/2" GYPSUM BOARD
 - 77 - 1/2" GYPSUM BOARD
 - 78 - 1/2" GYPSUM BOARD
 - 79 - 1/2" GYPSUM BOARD
 - 80 - 1/2" GYPSUM BOARD
 - 81 - 1/2" GYPSUM BOARD
 - 82 - 1/2" GYPSUM BOARD
 - 83 - 1/2" GYPSUM BOARD
 - 84 - 1/2" GYPSUM BOARD
 - 85 - 1/2" GYPSUM BOARD
 - 86 - 1/2" GYPSUM BOARD
 - 87 - 1/2" GYPSUM BOARD
 - 88 - 1/2" GYPSUM BOARD
 - 89 - 1/2" GYPSUM BOARD
 - 90 - 1/2" GYPSUM BOARD
 - 91 - 1/2" GYPSUM BOARD
 - 92 - 1/2" GYPSUM BOARD
 - 93 - 1/2" GYPSUM BOARD
 - 94 - 1/2" GYPSUM BOARD
 - 95 - 1/2" GYPSUM BOARD
 - 96 - 1/2" GYPSUM BOARD
 - 97 - 1/2" GYPSUM BOARD
 - 98 - 1/2" GYPSUM BOARD
 - 99 - 1/2" GYPSUM BOARD
 - 100 - 1/2" GYPSUM BOARD