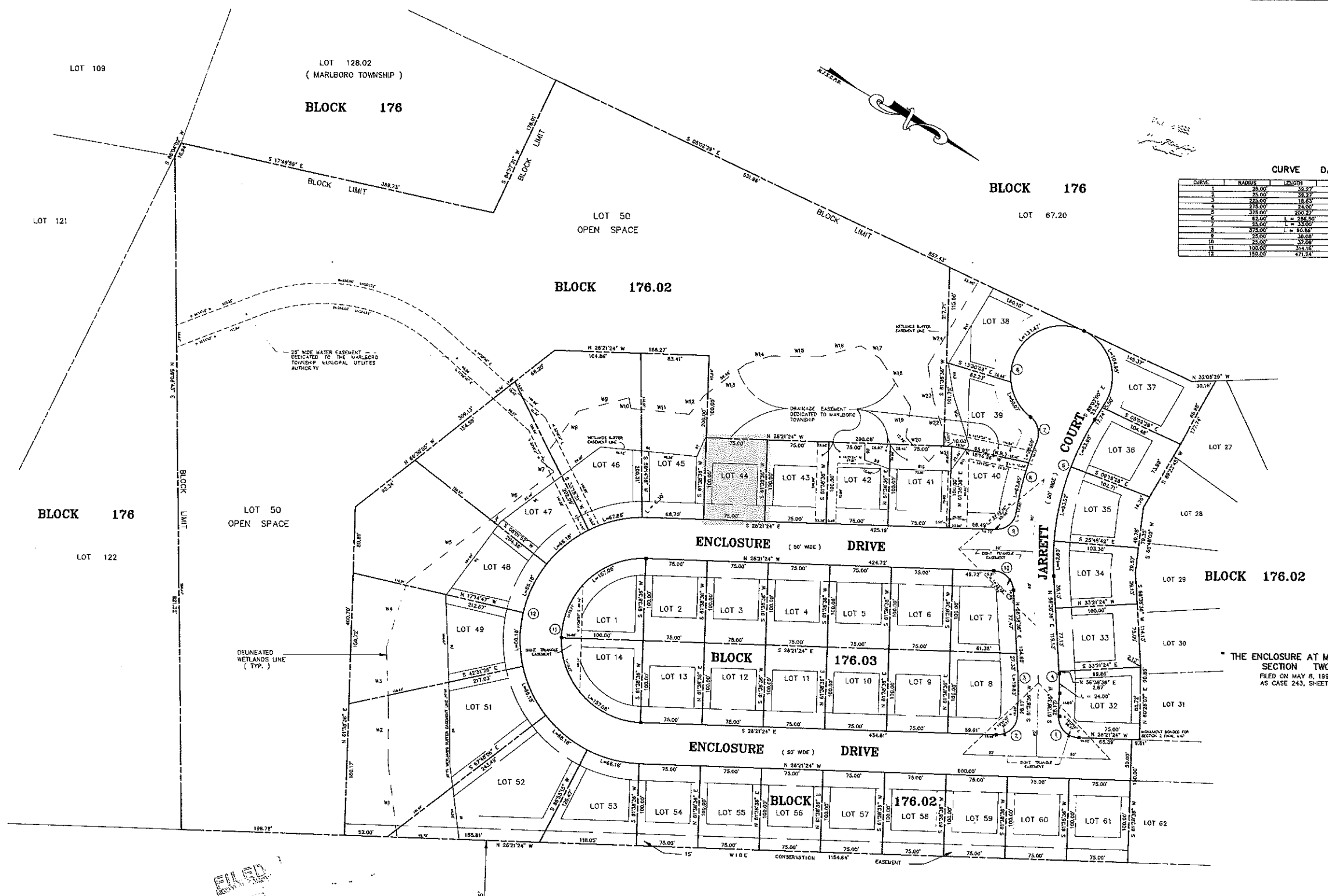


A-19



CURVE DATA TABULATION

CURVE	RADIUS	LENGTH	TANGENT	CHORD	BEARING	DELTA
1	25.00	38.27	25.00	38.26	N 88°21'24" E	89.000
2	25.00	38.27	25.00	38.26	N 73°21'24" W	89.000
3	25.00	38.27	25.00	38.26	S 88°21'24" W	89.000
4	25.00	38.27	25.00	38.26	S 73°21'24" E	89.000
5	25.00	38.27	25.00	38.26	N 88°21'24" E	89.000
6	25.00	38.27	25.00	38.26	N 73°21'24" W	89.000
7	25.00	38.27	25.00	38.26	S 88°21'24" W	89.000
8	25.00	38.27	25.00	38.26	S 73°21'24" E	89.000
9	25.00	38.27	25.00	38.26	N 88°21'24" E	89.000
10	25.00	38.27	25.00	38.26	N 73°21'24" W	89.000
11	25.00	38.27	25.00	38.26	S 88°21'24" W	89.000
12	25.00	38.27	25.00	38.26	S 73°21'24" E	89.000

WETLANDS TABULATION

LINE	DIRECTION	DISTANCE
W1	S 88°21'24" W	81.39'
W2	S 73°21'24" E	75.82'
W3	N 88°21'24" E	75.82'
W4	N 73°21'24" W	81.39'
W5	S 88°21'24" W	81.39'
W6	S 73°21'24" E	75.82'
W7	N 88°21'24" E	75.82'
W8	N 73°21'24" W	81.39'
W9	S 88°21'24" W	81.39'
W10	S 73°21'24" E	75.82'
W11	N 88°21'24" E	75.82'
W12	N 73°21'24" W	81.39'
W13	S 88°21'24" W	81.39'
W14	S 73°21'24" E	75.82'
W15	N 88°21'24" E	75.82'
W16	N 73°21'24" W	81.39'
W17	S 88°21'24" W	81.39'
W18	S 73°21'24" E	75.82'
W19	N 88°21'24" E	75.82'
W20	N 73°21'24" W	81.39'
W21	S 88°21'24" W	81.39'
W22	S 73°21'24" E	75.82'
W23	N 88°21'24" E	75.82'
W24	N 73°21'24" W	81.39'

WETLANDS BUFFER EASEMENT

LINE	DIRECTION	DISTANCE
B1	S 88°21'24" W	81.39'
B2	S 73°21'24" E	75.82'
B3	N 88°21'24" E	75.82'
B4	N 73°21'24" W	81.39'
B5	S 88°21'24" W	81.39'
B6	S 73°21'24" E	75.82'
B7	N 88°21'24" E	75.82'
B8	N 73°21'24" W	81.39'
B9	S 88°21'24" W	81.39'
B10	S 73°21'24" E	75.82'
B11	N 88°21'24" E	75.82'
B12	N 73°21'24" W	81.39'
B13	S 88°21'24" W	81.39'
B14	S 73°21'24" E	75.82'
B15	N 88°21'24" E	75.82'
B16	N 73°21'24" W	81.39'

LOT AREA TABULATION

LOT 32	8,246 S.F.	LOT 56	7,500 S.F.
LOT 33	7,712 S.F.	LOT 57	7,500 S.F.
LOT 34	7,593 S.F.	LOT 58	7,500 S.F.
LOT 35	8,063 S.F.	LOT 59	7,500 S.F.
LOT 36	8,133 S.F.	LOT 60	7,500 S.F.
LOT 37	8,977 S.F.	LOT 61	7,500 S.F.
LOT 38	10,672 S.F.		
LOT 39	9,747 S.F.		
LOT 40	7,776 S.F.		
LOT 41	7,500 S.F.	LOT 1	7,854 S.F.
LOT 42	7,500 S.F.	LOT 2	7,500 S.F.
LOT 43	7,500 S.F.	LOT 3	7,500 S.F.
LOT 44	7,500 S.F.	LOT 4	7,500 S.F.
LOT 45	15,841 S.F.	LOT 5	7,500 S.F.
LOT 46	23,977 S.F.	LOT 6	7,500 S.F.
LOT 47	21,676 S.F.	LOT 7	7,591 S.F.
LOT 48	25,328 S.F.	LOT 8	8,266 S.F.
LOT 49	23,456 S.F.	LOT 9	7,500 S.F.
LOT 50	8,789 AC.	LOT 10	7,500 S.F.
LOT 51	30,036 S.F.	LOT 11	7,500 S.F.
LOT 52	18,264 S.F.	LOT 12	7,500 S.F.
LOT 53	9,794 S.F.	LOT 13	7,500 S.F.
LOT 54	7,500 S.F.	LOT 14	7,854 S.F.
LOT 55	7,500 S.F.		

THE ENCLOSURE AT MARLBORO SECTION TWO FILED ON MAY 8, 1992 AS CASE 243, SHEET 8

Case No. 246-12 Filed 5-6-93
The Enclosure at Marlboro
Twp. Marlboro

MONMOUTH COUNTY PLANNING BOARD
Date: MAY 6 1993
APPROVED
John P. Hundley, P.E.
Signature

Case #246-12 Filed 5-6-1993
THE ENCLOSURE AT MARLBORO

I HAVE CAREFULLY EXAMINED THIS MAP AND FOUND IT COMPLES WITH THE PROVISIONS OF THE MAP FILING LAW, AND THE MUNICIPAL ORDINANCES AND REQUIREMENTS APPLICABLE THEREIN.
David P. Hundley
MUNICIPAL ENGINEER

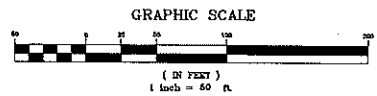
THIS IS TO CERTIFY THAT THE PLANNING BOARD IS THE PROPER AUTHORITY AND HAS APPROVED THIS MAP AND THAT THIS MAP COMPLES WITH ALL PROVISIONS OF A.S. 46:23-6.9 INASMUCH AS THE MAP FILING LAW, THIS MAP SHALL BE FILED IN THE MONMOUTH COUNTY CLERK'S OFFICE ON OR BEFORE THE DAY OF 19, WHICH IS 60 DAYS FROM THE DATE OF SIGNING OF THIS PLAN.
Edward J. Gagnier
SECRETARY OF PLANNING BOARD
Lynn P. Allen
CHAIRMAN OF PLANNING BOARD

STATE OF NEW JERSEY, COUNTY OF MONMOUTH
BE IT REMEMBERED THAT ON THIS 6th DAY OF MAY 1993 BEFORE ME, the undersigned, a Notary Public in and for the State of New Jersey, who by being duly sworn on this date did depose and acknowledge that he is the owner of the premises shown on this map and that the foregoing consent was executed by him as and for his voluntary act and deed of said corporation.
Daniel P. Hundley
NOTARY PUBLIC

I CERTIFY THAT A BOND HAS BEEN GIVEN TO THE MUNICIPALITY, GUARANTEEING THE FUTURE SETTING OF MONUMENTS SHOWN ON THIS MAP AND SO DESIGNATED.
I CERTIFY THAT THE PUBLIC STREETS OR OTHER WAYS SHOWN HEREON HAVE BEEN APPROVED AS TO LOCATION AND WIDTH AND NAMES BY THE PROPER AUTHORITY.
5/6/93
Lynne Kieckhefer
MUNICIPAL CLERK

I HEREBY CERTIFY THAT THIS MAP AND SURVEY HAS BEEN MADE UNDER MY SUPERVISION AND THAT IT COMPLES WITH THE PROVISIONS OF THE MAP FILING LAW.
Daniel P. Hundley
DANIEL P. HUNDLEY
L.S. N.J. Lic. No. 33174

THE UNDERSIGNED DULY ORGANIZED CORPORATION HEREBY DECLARES THAT IT IS THE OWNER OF LANDS DESIGNATED HEREON AND HEREBY CONSENTS TO THE FILING OF THIS MAP IN THE OFFICE OF THE CLERK OF MONMOUTH COUNTY.
[Signature]



■ DENOTES MONUMENT TO BE SET

TYPICAL SETBACK REQUIREMENTS
MFL FRONT SETBACK = 20'
MFL SIDE SETBACK = 10'
MFL REAR SETBACK = 30'

NO.	REV.	DESCRIPTION	DATE
3	REV.	LANDSCAPE BUFFER TO CONSERVATION EMT	4/23/93
2	REV.	MISC EASEMENTS, ADD LOT AREAS, BUFFERS	11/13/92
1	REV.	DRAINAGE EASMT. WIDTH	1-5-93
NO			

CREST
Engineering Associates Inc.
PROFESSIONAL ENGINEERS & PLANNERS
LAND SURVEYORS - LANDSCAPE ARCHITECTS
10 ACRES RD. P.O. BOX 1210 STATE HWY. 33
MONMOUTH, N.J. 08852
(609) 444-2500
10 ACRES RD. P.O. BOX 1210
STATE HWY. 33
MONMOUTH, N.J. 08852
(609) 244-0216
Daniel P. Hundley
DANIEL P. HUNDLEY
L.S. N.J. Lic. No. 33174

DATE: 12/10/92
SCALE: 1"=50'
DRAWN: [Signature]
CHECKED: [Signature]
IN CHARGE: [Signature]
PROJECT: [Signature]
E

LOTS 59-A, 60-A
61-A, 64-A, 67-A
BLOCK 53
MARLBORO TOWNSHIP
MONMOUTH COUNTY, NEW JERSEY

FINAL MAP
SECTION THREE

246-12

246-12